

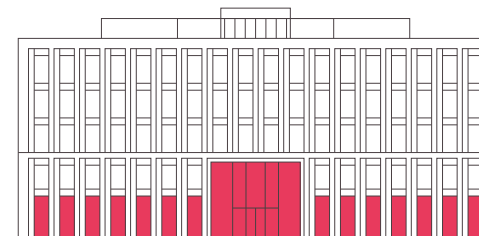


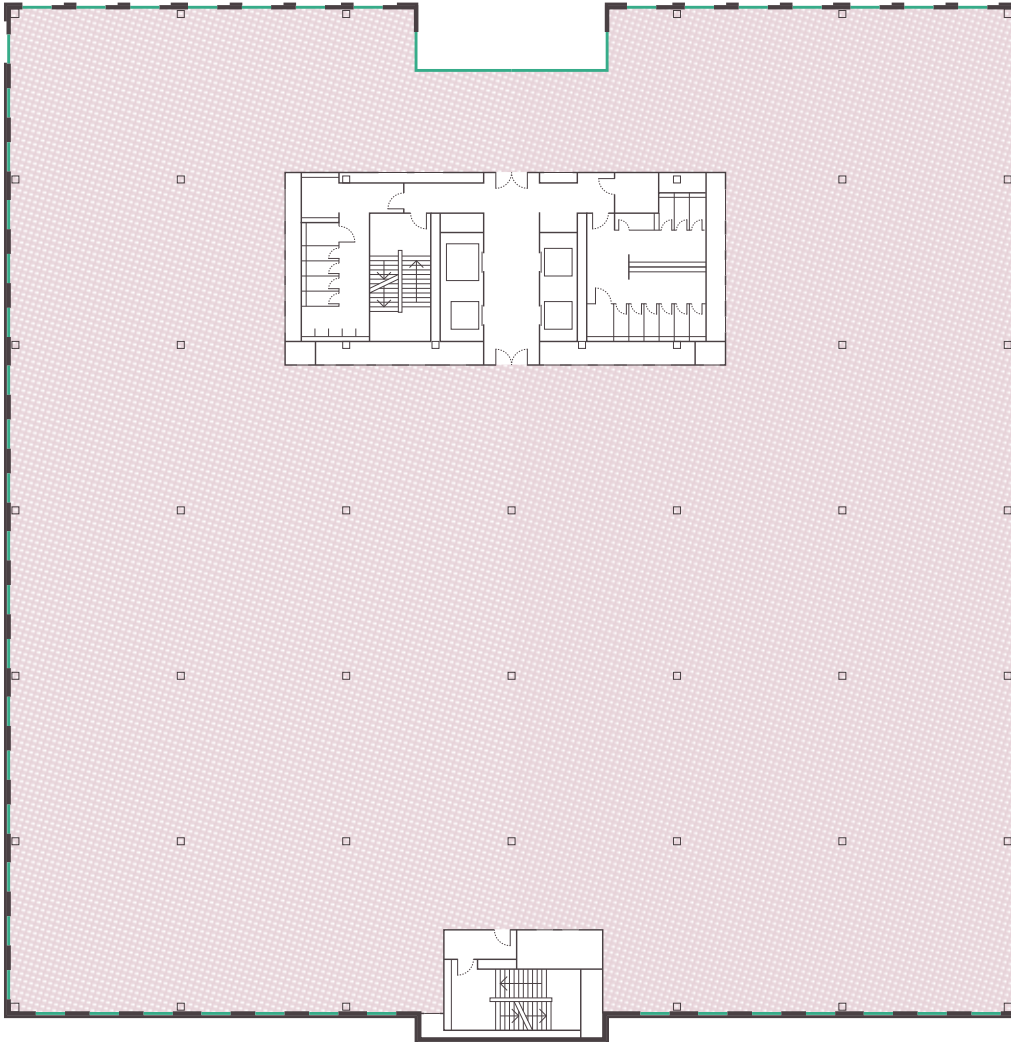
Slough Station: 35 metres



Ground Floor

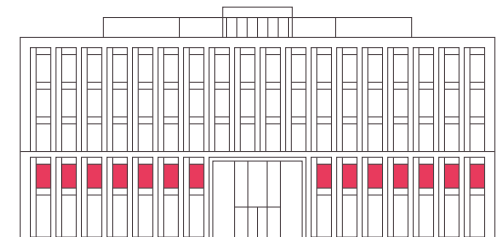
Double-height reception, café / restaurants
100 x car parking spaces, 100 x bicycle parking spaces

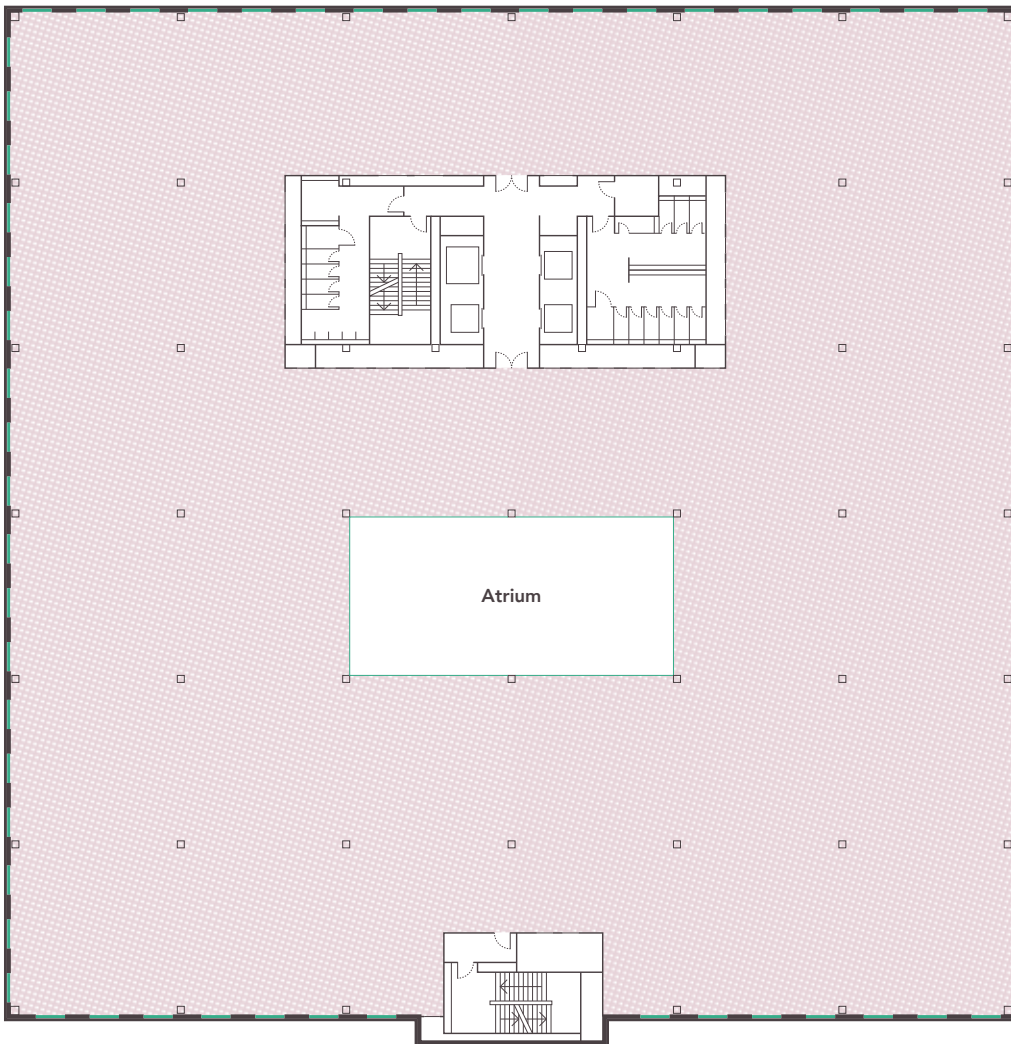




First Floor

Offices: 28,430 sq ft / 2,640 sq m
Floor-to-ceiling height: 3.6m





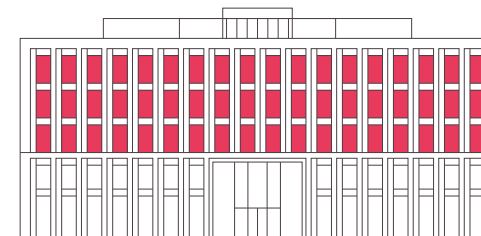
Typical Floor

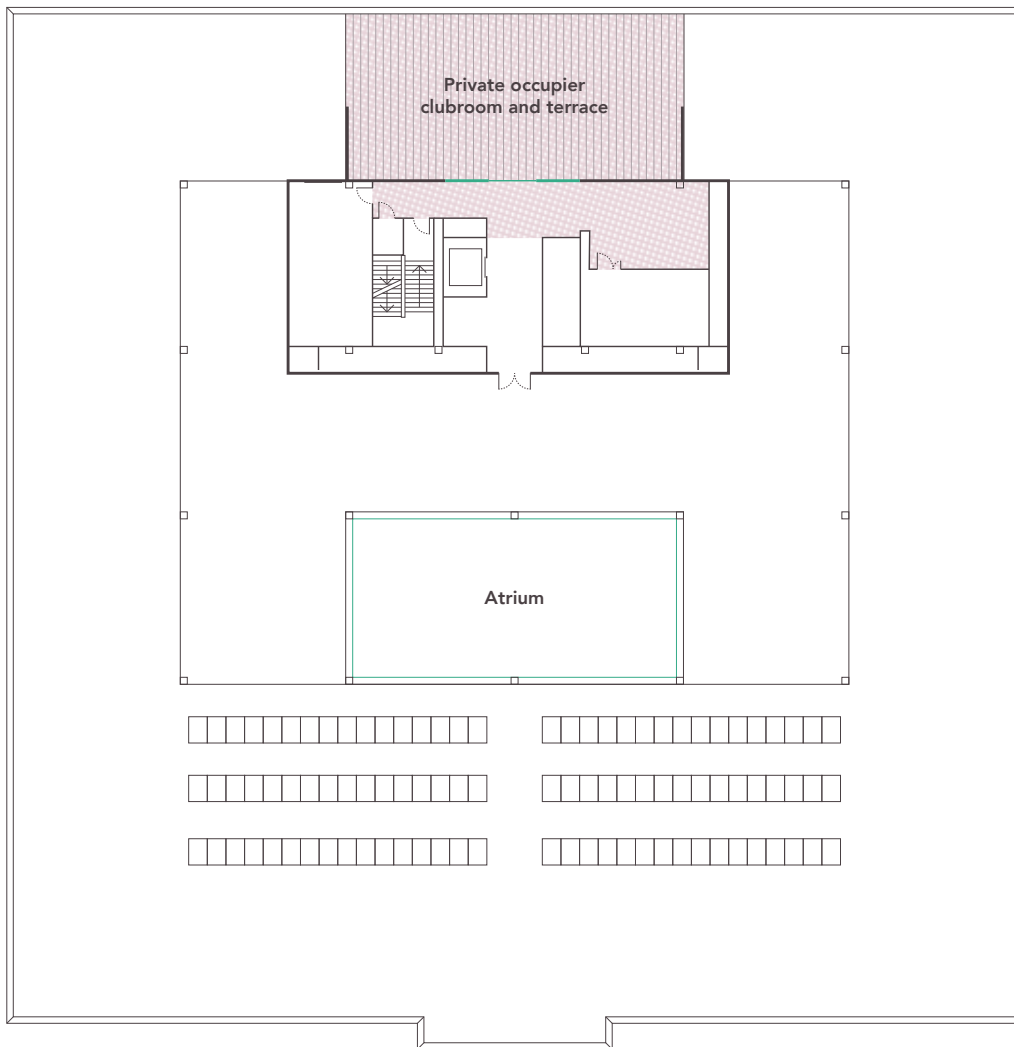
Second floor offices: 27,400 sq ft / 2,545 sq m

Third floor offices: 27,400 sq ft / 2,545 sq m

Fourth floor offices: 27,395 sq ft / 2,545 sq m

Floor-to-ceiling height: 3.6m





Fifth Floor

Private occupier clubroom and terrace: 1,960 sq ft / 182 sq m
Floor-to-ceiling height: 3.6m

